

**Heli Dyne Systems
Dual Pivoting Litter P/N HDSTD-15-2011
Illustrated Parts Catalog**

Manufacturer's Notice

The information contained in this manual is presented for reference only, is subject to change at the discretion of Heli Dyne Systems, Inc and without notice.

Fig	Index	Part Number	Nomenclature	Qty
1		HDSTD-15-3019-01	Boards Assy	
	1	HDSTD-15-3017-01	Assy, Lower Board	1
	2	HDSTD-15-3018-01	Assy, Mid-Board	1
	3	HDSTD-15-6045-01	Pin	24
	4	HDSTD-15-6045-05	Pivot Stop	2
	5	HDSTD-15-3017-02	Pin, Release	2
	6	HDSTD-15-6046-12	Cover	1
	7	HDSTD-15-6047-14	Thrust Washer	1
	8	HDSTD-15-6047-03	Spacer	2
	9	LC-035F-2	Spring	1
	10	LC-050K-1	Spring	2
	11	LC-035F-4	Spring	1
	12	MS24694-S27	Screw, Csk	24
	13	MS17826-5	Nut, Castellated	1
	14	MS21042-L08	Nut, Self-locking	24
	15	AN960PD8 or -KD8	Washer	24
	16	AN960PD516L or KD516L	Washer	1
	17	NAS-451-7	Plug, Button	1
	18	AN960PD516 or KD516	Washer	1
	19	HDSTD-15-3019-02	Rack Stop Assy	1

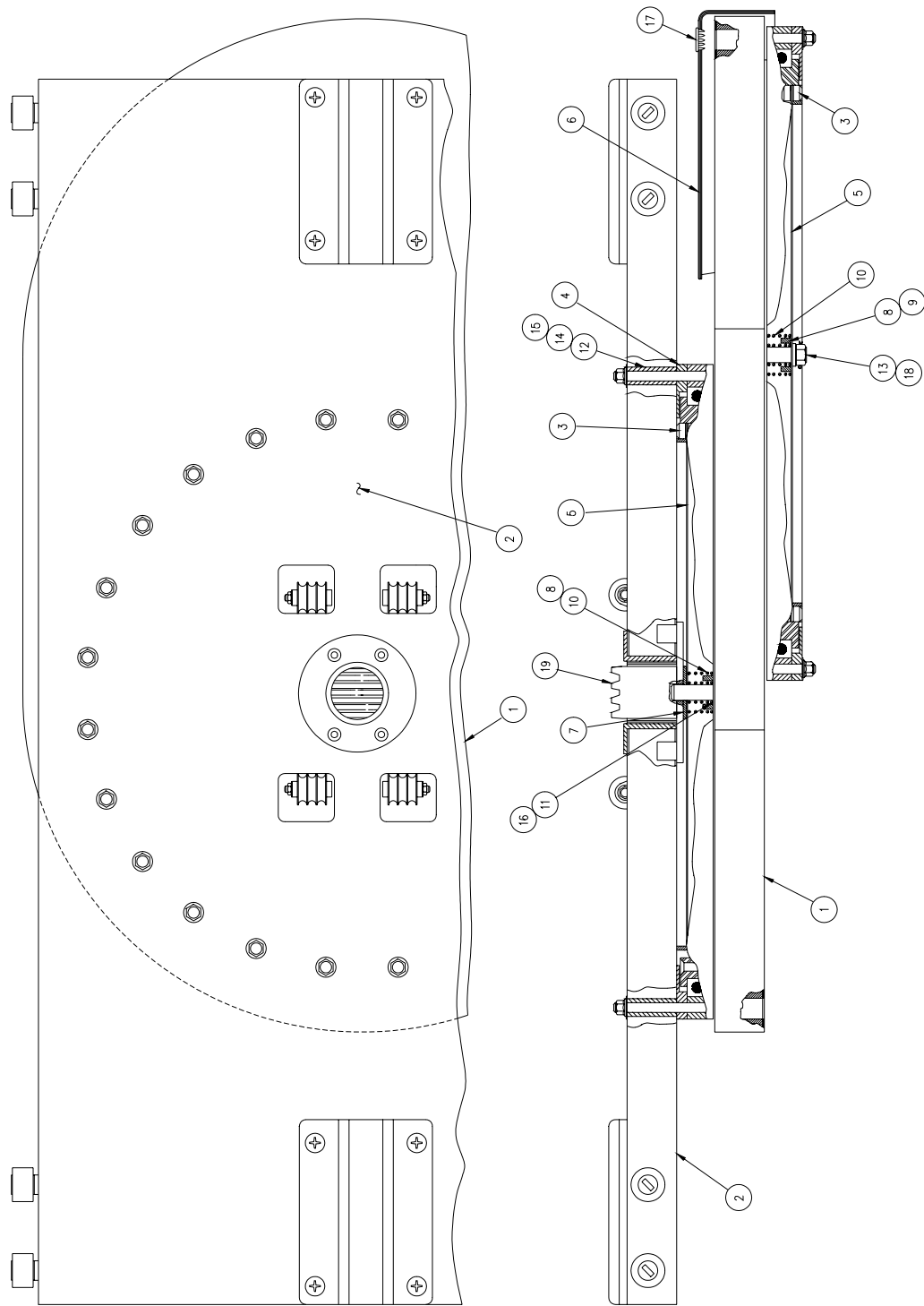


FIGURE 1

Fig	Index	Part Number	Nomenclature	Qty
2		HDSTD-15-3019-02	Rack Stop Assy	
	1	HDSTD-15-6049-02	Rack Stop	1
	2	HDSTD-15-6047-10	Strike Plate	1
	3	HDSTD-15-6047-11	Guide	2
	4	HDSTD-15-6047-13	Spacer	1
	5	MS24693-S27 or -S28	Screw	2
	6	MS24694-S4 or -S5	Screw	2

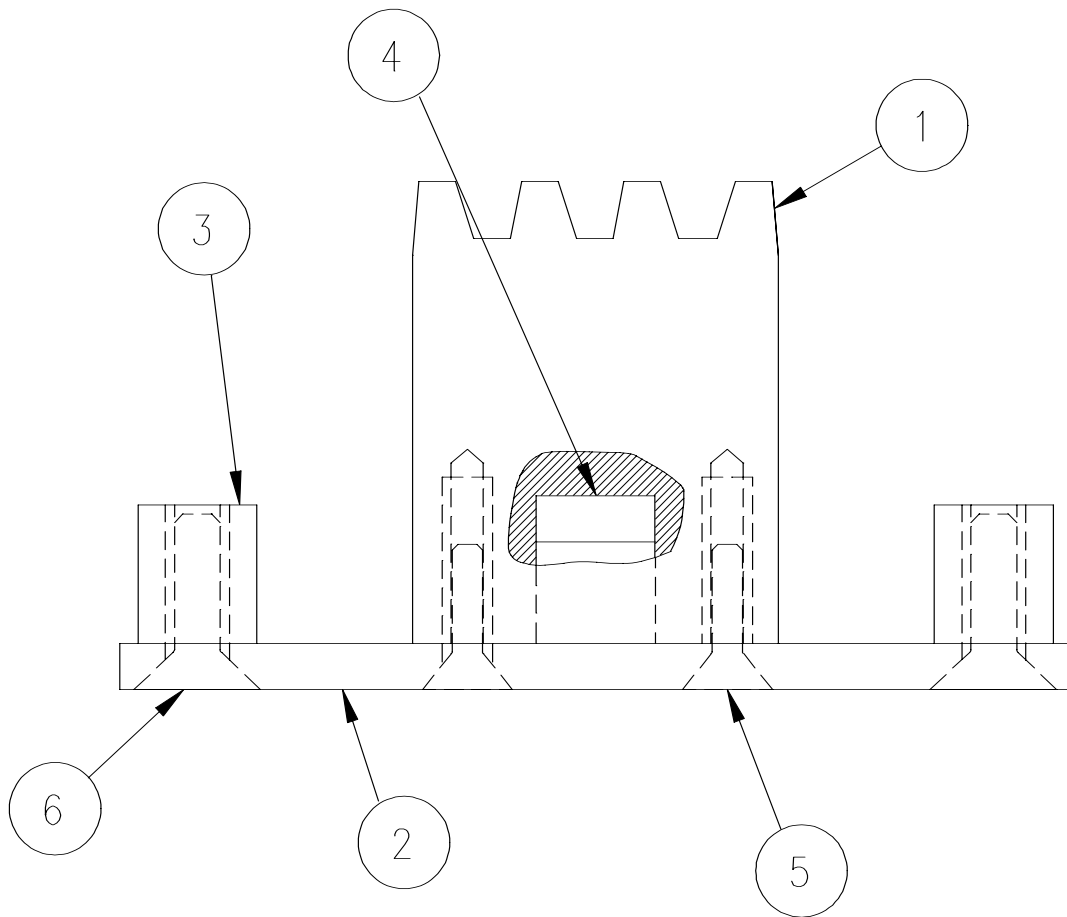


FIGURE 2

Fig	Index	Part Number	Nomenclature	Qty
3		HDSTD-15-3017-01	Lower Board Assy	
	1	HDSTD-15-6045-02	Bearing Spacer	2
	2	HDSTD-15-3016-02	Lower Board Sub-Assy	1
	3	HDSTDF-15-6045-02	Pin (Ref)	9
	4	HDSTD-15-6045-03	Bearing Retainer	2
	5	HDSTD-15-6045-04	Bearing Retainer	2
	6	KC110XPO	Bearing	2
	7	MS24694-S11 or S10	Screw, Csk Head	4
	8	MS21042L08	Nut	44
	9	AN960PD8	Washer	44
	10	MS24694-S25	Screw, Csk Head	44
11	HDSTD-15-6045-06	Pin Release (Ref)	1	

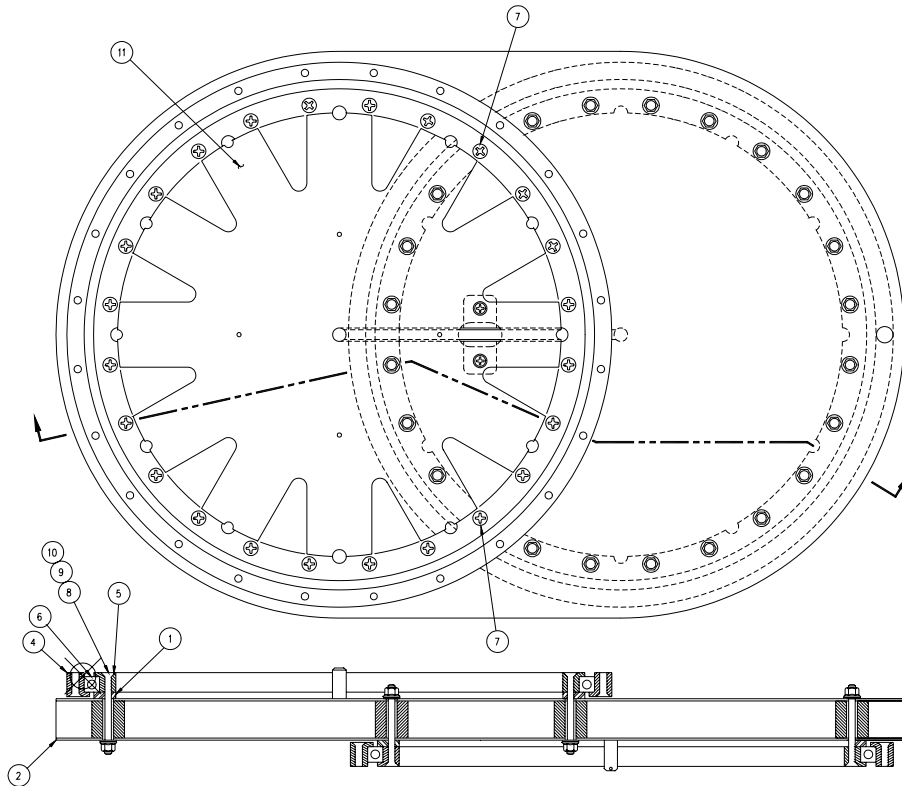


FIGURE 3

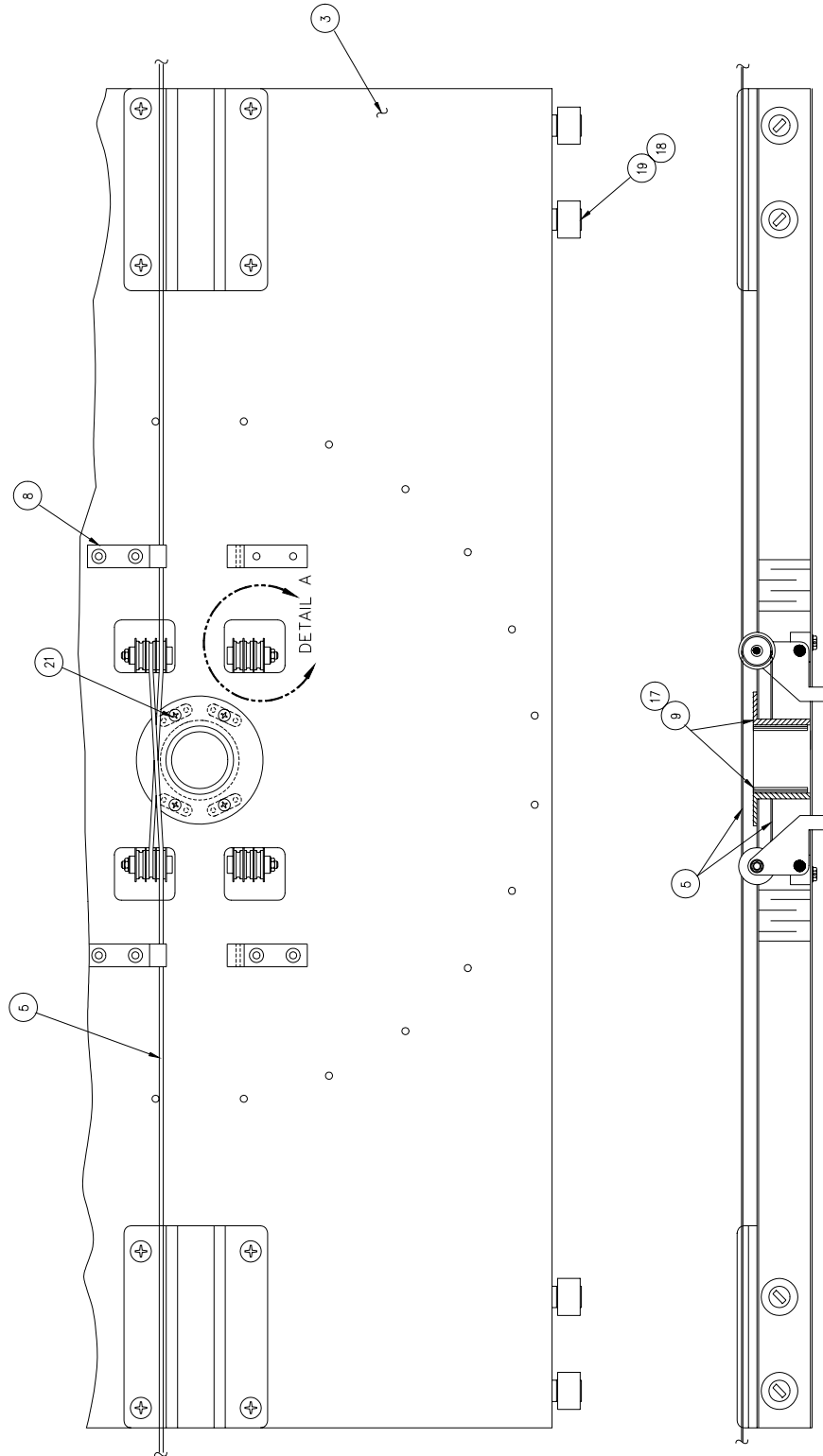


FIGURE 4

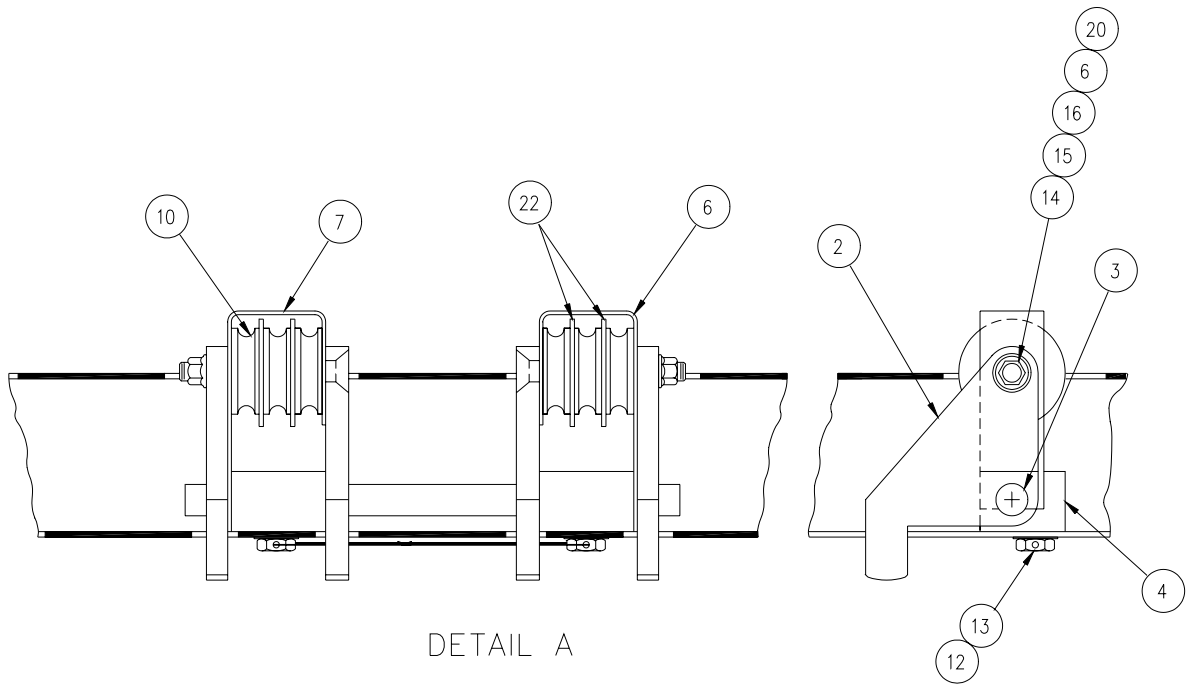


Fig	Index	Part Number	Nomenclature	Qty
4		HDSTD-15-3018-01	Mid Board Assembly	
	1	HDSTD-15-3016-01	Sub-Assembly, Mid Board	1
	2	HDSTD-15-6047-08	Lever	8
	3	HDSTD-15-6047-12	Pin	2
	4	HDSTD-15-6047-09	Pin Retainer	4
	5	HDSTD-15-6050-03	Cable	2
	6	HDSTD-15-6047-19	Cable Retainer	2
	7	HDSTD-15-6047-16	Cable Retainer	2
	8	HDSTD-15-6046-10	Cable Guide	4
	9	HDSTD-15-6046-03	Linear Stop Retainer	1
	10	CPS-243 or -2038	Pulley	12
	11	MS20995C32	Safety Wire	A/R
	12	AN960PD10L or -KD10L	Washer	4
	13	AN3H3A or AN3H3	Bolt	4
	14	MS21042L04	Nut, Self-Lock	4
	15	AN960-4L or -C4L	Washer	4

16	MS24693S10	Screw, 4-40	4
17	701-00016-032	Bushing	1
18	AN960PD416Lor -KD416L	Washer	8
19	CRS-10-1 or CRSB-10-1	Cam Follower	8
20	AN960PD516L	Washer	8
21	MS24693-S25	Screw	4

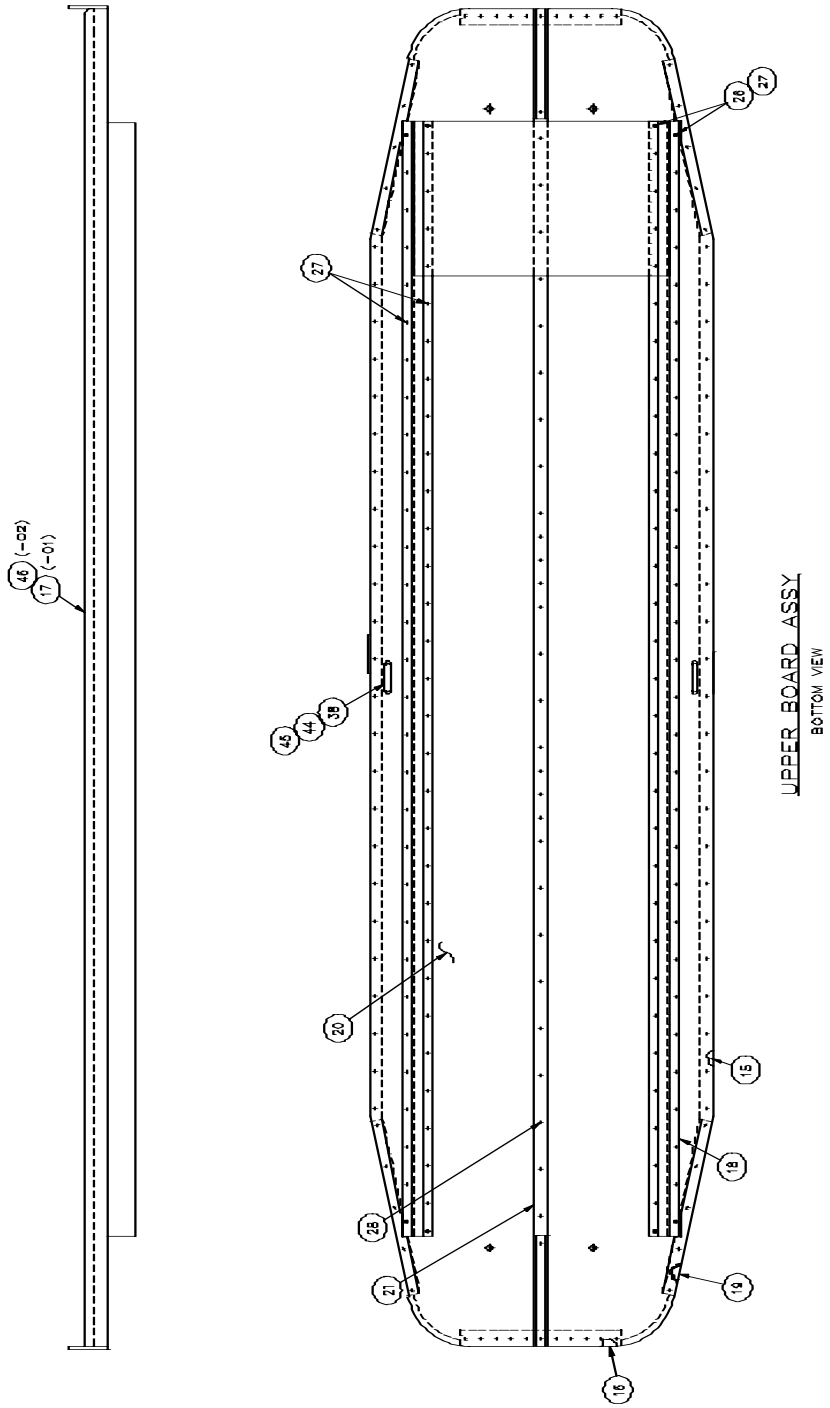


Figure 5 a

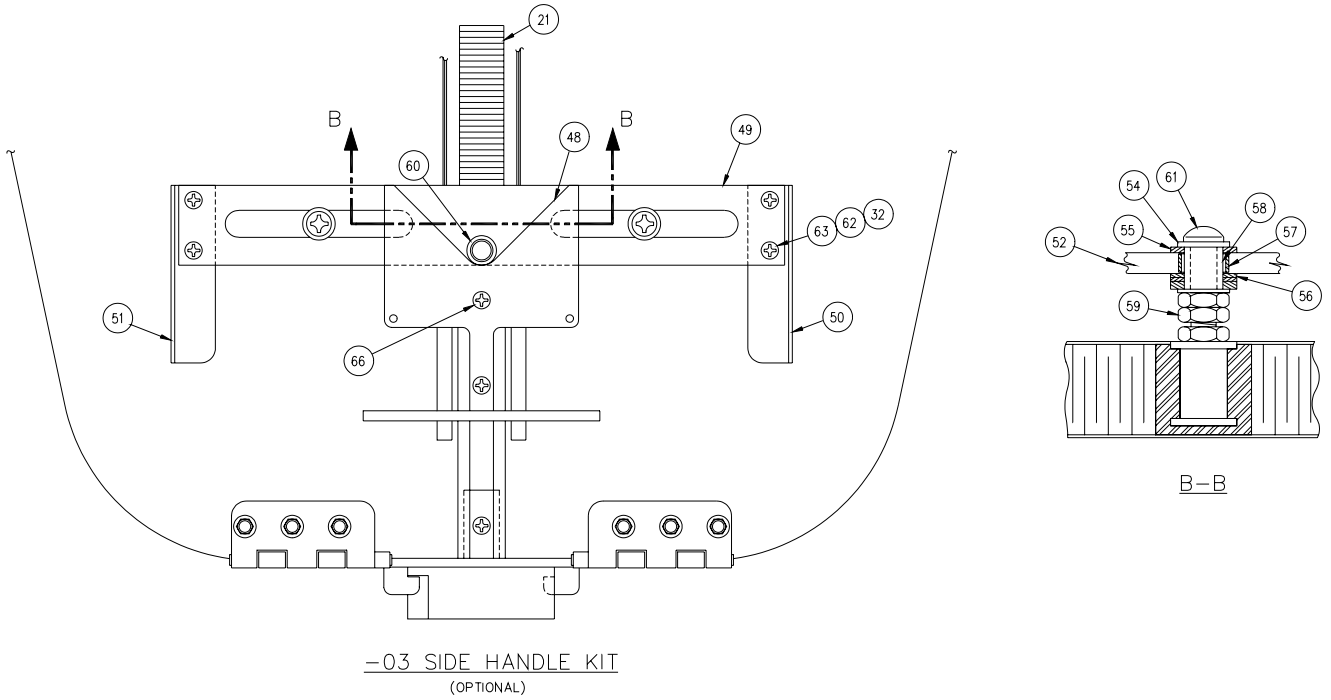


Figure 5 c

Fig	Index	Part Number	Nomenclature	-01	-02	-03
5		HDSTD-15-3021-01	Upper Board Assy			
		HDSTD-15-3021-02	Upper Board Assy			
		HDSTD-15-3021-03	Side Handle Kit (Optional)			
	1	HDSTD-15-6050-02	Bushing	1	1	
	2	HDSTD-15-6050-03	Cable			
	3	HDSTD-15-6050-04	Rail	2	2	
	4	HDSTD-15-6050-05	Bracket	2	2	
	5	HDSTD-15-6050-06	Bracket	2	2	
	6	HDSTD-15-6050-07	Stop	2	2	
	7	HDSTD-15-6050-08	Spring Guide	4	4	
	8	HDSTD-15-6050-09	Slider	2	2	
	9	HDSTD-15-6050-10	Fwd Bracket	1		
	10	HDSTD-15-6050-11	Fwd Bracket	1		
11	HDSTD-15-6050-12	Aft Bracket	1			
12	HDSTD-15-6050-13	Latch Hook	1	2		

13	HDSTD-15-6050-14	Hinge	1	2	
14	HDSTD-15-6050-15	Hinge	1	2	
15	HDSTD-15-6060-06	Edging	2	2	
16	HDSTD-15-6060-07	Edging	2	2	
17	HDSTD-15-6060-08	Litter Pan	1		
18	HDSTD-15-6060-04	Rail	2	2	
19	HDSTD-15-6060-05	Edging	4	4	
20	HDSTD-15-6060-01	Board	1	1	
21	HDSTD-15-6049-01	Rack	1	1	
22	HDSTD-15-6050-01	Latch	1	2	
23	HDSTD-15-6050-16	Nut	Ref	Ref	
24	HDSTD-15-6050-19	Slider	2	2	
25	MS24694S6	Screw	2	2	
26	AN960PD10L or -KD10L	Washer	9	9	
27	MS27039-1-10	Screw	8	8	
28	MS24694-S3 or -S4	Screw	28	28	
29	MS27039-0805 or -0806	Screw	2	2	
30	MS24694S17	Screw	8	16	
31	AN960PD8L or -KD8L	Washer	28	26	
32	MS21042-L08	Nut	20	20	4
33	MS27039-0818	Screw	2	4	
34	90-003-3	Cap Nut	2	4	
35	LC-035F-1SS	Spring, Stainless	1	2	
36	MS24694S58	Screw	1	2	
37	MS35206-229 or -230	Screw	4	4	
38	MS24694S47 or -S48	Screw	5	5	
39	LC-014B-14SS	Spring, Stainless	Ref	Ref	
40	MS24694S16	Screw	10		
41	AN960PD6L or -KD6L	Washer	4	4	
42	MS27039-0807	Screw	2	2	
43	MS24693S27	Screw	4	4	

44	43977-10 or 7771	Footman Loop	2	2	
45	FAA-TSO-C22F	Belt	1	1	
46	HDSTD-15-6060-09	Litter Pan		1	
47	MS24694S3	Screw	4	4	
48	HDSTD-15-6050-17	Cam			1
49	HDSTD-15-6050-18	Actuator			1
50	HDSTD-15-6052-22	Handle			1
51	HDSTD-15-6050-23	Handle			1
52	HDSTD-15-6050-24	Fwd Bracket		1	
53	HDSTD-15-6050-25	Aft Bracket		1	
54	AN960PD10L	Washer			4
55	AN960PD516	Washer			4
56	AN960PD516L	Washer			4
57	NAS43DD5-11	Spacer			2
58	NAS43DD3-20	Spacer			2
59	AN345-10	Nut			6
60	CRSB-8 kor CRSB-8-1, or CRS-8 or CRS-8-1	Cam Follower			1
61	NAS603-18 or -18P	Screw			2
62	AN960PD8	Washer			4
63	MS24694S\$ or -S5	Screw			6

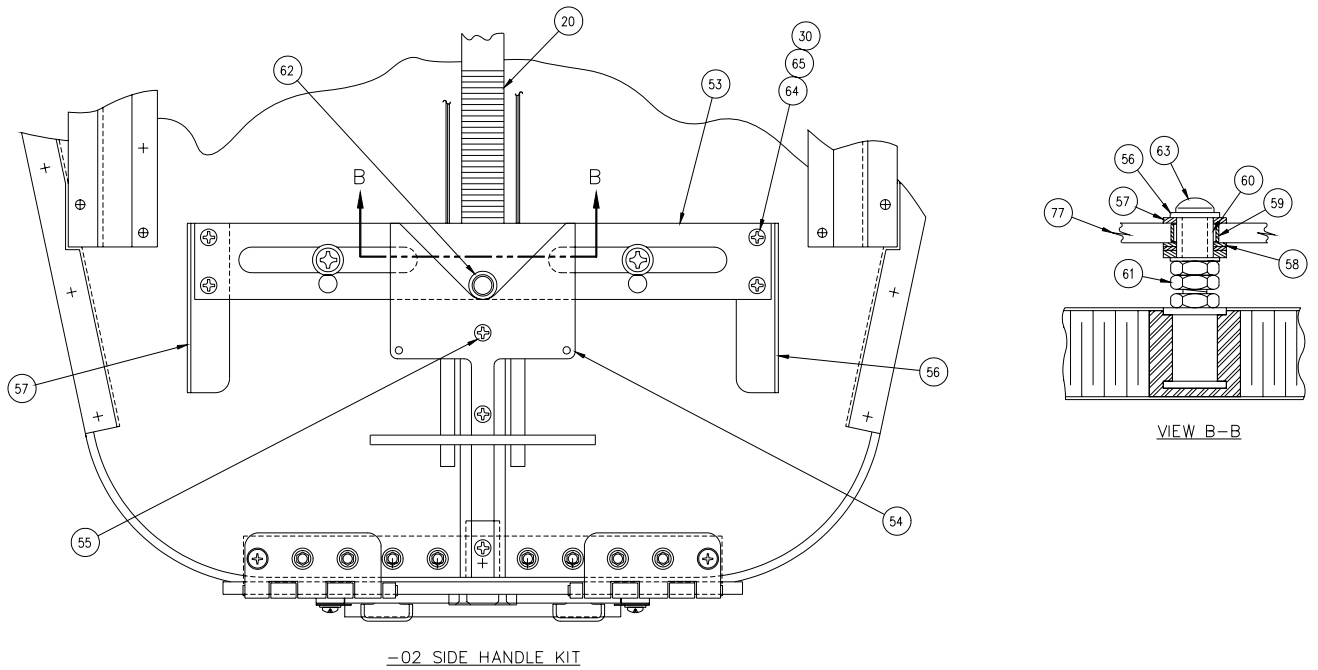
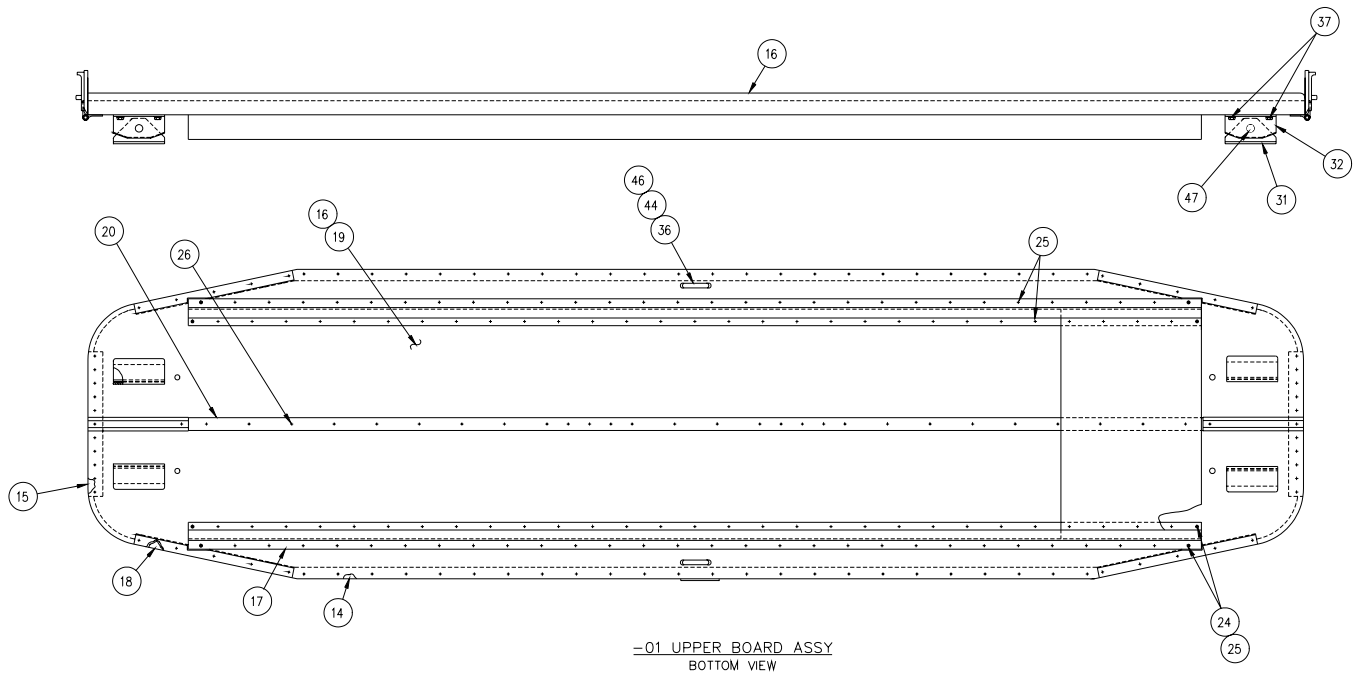


Figure 5 d

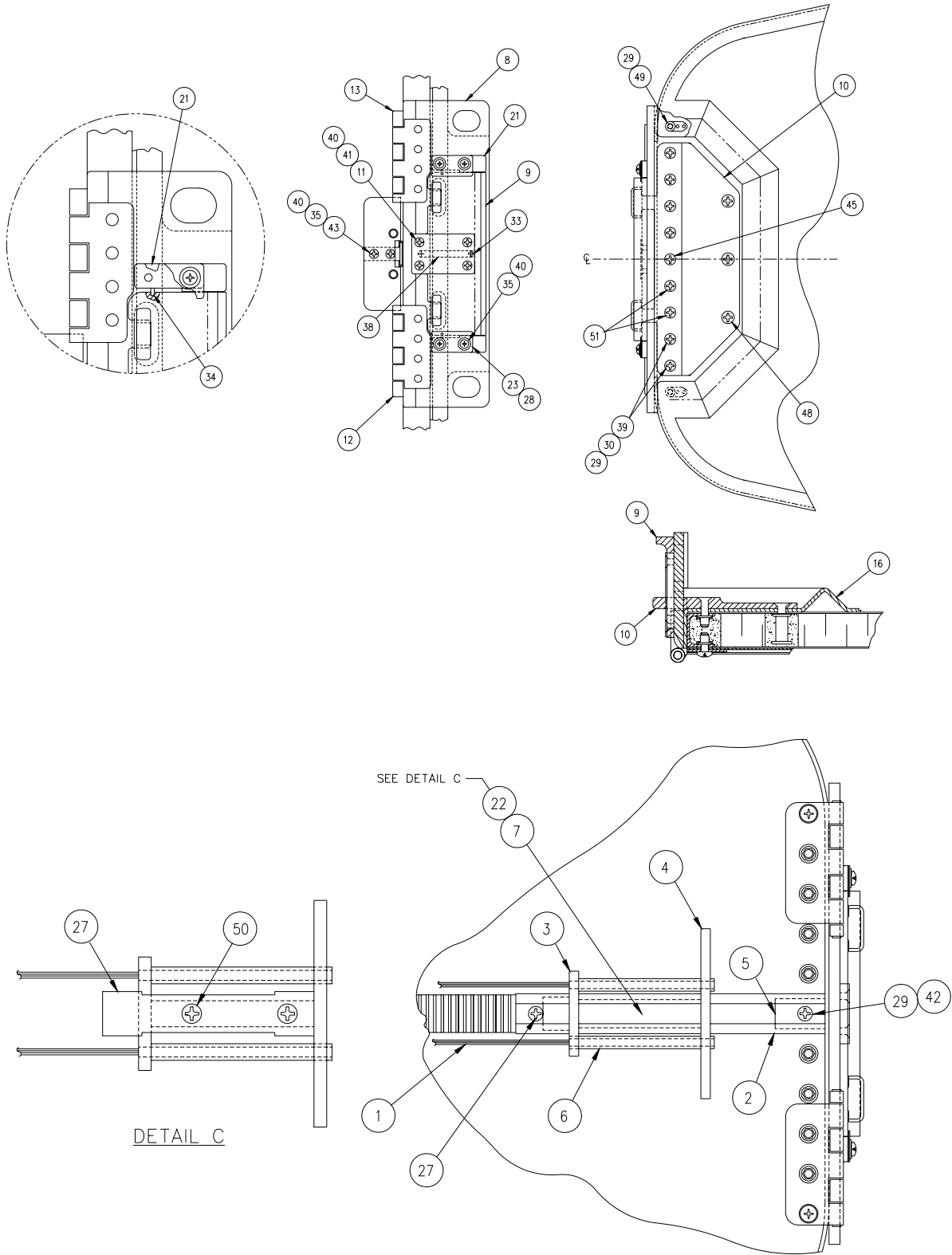


Figure 6

Fig	Index	Part Number	Nomenclature	-01	-02
6		HDSTD-15-3044-01	Upper Board Assembly		
		HDSTD-15-3044-02	Side Handle Kit (Optional)		
	1	HDSTD-15-6050-03	Cable	Ref	
	2	HDSTD-15-6050-04	Rail	2	
	3	HDSTD-15-6050-05	Bracket	2	
	4	HDSTD-15-6050-06	Bracket	2	
	5	HDSTD-15-6050-07	Stop	2	
	6	HDSTD-15-6050-08	Spring Guide	4	
	7	HDSTD-15-6050-09	Slider	2	
	8	HDSTD-15-6050-26	Stretcher Retainer	2	
	9	HDSTD-15-6050-27	Release Handle	2	
	10	HDSTD-15-6050-28	Latch Hook	2	
	11	HDSTD-15-6050-29	Retainer Plate	2	
	12	HDSTD-15-6050-14	Hinge	2	
	13	HDSTD-15-6050-15	Hinge	2	
	14	HDSTD-15-6060-06	Edging	2	
	15	HDSTD-15-6060-07	Edging	2	
	16	HDSTD-15-6060-11	Litter Pan	1	
	17	HDSTD-15-6060-04	Rail	2	
	18	HDSTD-15-6060-05	Edging	4	
	19	HDSTD-15-6060-01	Board	1	
	20	HDSTD-15-6049-01	Rack	1	
	21	HDSTD-15-6050-30	Spacer	4	
	22	HDSTD-15-6050-19	Slider	2	
	23	HDSTD-15-6050-31	Spacer	4	
	24	AN960PD10L or -KD10L	Washer	32	
	25	MS27039-1-10	Screw	8	
	26	MS24694-S3 or -S4	Screw	28	
27	MS27039-0805 or 0806	Screw	2		
28	HDSTD-15-6050-32	Retainer	4		

29	AN960PD8L or -KD8L	Washer	22	
30	MS21042-L08	Nut	16	4
31	HDSTD-15-3044-44	Foot	4	
32	HDSTD-15-3044-45	Foot	4	
33	MS171494	Pin-Spring	2	
34	MS171430	Pin-Spring	4	
35	MS35206-229	Screw	12	
36	MS24694S47 or S48	Screw	4	
37	MS27039-1-06 or -07	Screw	12	
38	LC-024B-15SS	Spring, Stainless	2	
39	MS24694S21	Screw	8	
40	AN960PD6L or -KD6L	Washer	20	
41	MS24693S23	Screw	8	
42	MS27039-0807	Screw	2	
43	MS24693S27	Screw	4	
44	43977-10	Footman Loop	2	
45	MS24694S7	Screw	2	
46	FAA-TSO-C22F	Belt	1	
47	22K2-02	Capnut	4	
48	MS24694S50	Screw	6	
49	MS27039-0819	Screw	4	
50	MS24694S3	Screw	4	
51	MS24694S19	Screw	8	
52	HDSTD-15-6050-17	Cam		1
53	HDSTD-15-6050-18	Actuator		1
54	HDSTD-15-6050-22	Handle		1
55	HDSTD-15-6050-23	Handle		1
56	AN960PD10L	Washer		4
57	AN960PD516	Washer		4
58	AN960PD516L	Washer		4
59	NAS43DD5-11	Spacer		2

60	NAS43DD3-20	Spacer	2
61	AN345-10	Nut	6
62	CRSB-8 or CRSB-8-1 or DCRS-8 or CRS-8-1	Cam Follower	1
63	NAS603-18	Screw	2
64	AN960PD8	Washer	4
65	MS24694S4 or -S5	Screw	6